

# ASHRAE Rochester



VOLUME 13, ISSUE 10

JUNE 2019

## INSIDE THIS ISSUE:

Officer / Committee List	2
PAOE Points	3
President's Message	4
Highlights from Golf Outing	5
<b>ASHRAE Golf Sponsorships</b>	6
Job Opening	7
Committee Updates	8
ASHRAE Certification	11
Membership Application	13
Student Member- ship Application	15
<b>BOG Meeting Minutes</b>	17
ASHRAE News	21
<b>Annual Conference</b>	22
Region I CRC Announcement	23
<b>ASHRAE Webinar Info</b>	28



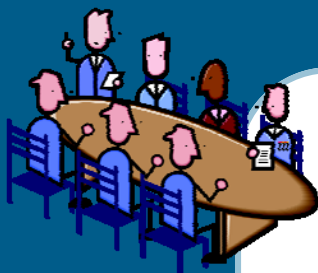
## 2019 REGION 1 CRC – NIAGARA FRONTIER

Thursday, August 15th – Saturday, August 17th

WELCOME TO BUFFALO!

*(refer to page 23)*

Statements made in this publication are not expressions of the Society or of the chapter and may not be reproduced without special permission of the chapter.



## Chapter Officers

### President

Paul Kenna, PE  
(585) 261-0558  
Paul.kenna@pres-services.com

### President Elect

Tom Streber  
(585) 272-9450  
tstreber@jswanson.com

### Treasurer

Mike Benedict  
(585) 490-2661  
mike@airsystemsbalancing.com

### Secretary

Scott Edwards  
(585) 301-6591  
scott.g.edwards@jci.com

## Committee Chairs

### CTTC

Jeff Wiedrick (585) 498-7919  
jwiedrick@bergmannpc.com

### Grassroots Government Advocacy

Marjani Wilson (585) 402-7069  
mwilson@labellapc.com

### Refrigeration Co-Chairs

Michael Nohle (585) 545-5522  
mnohle@meiersupply.com  
Sam Scorsone, PE (585) 429-3925 ext 3925  
Samuel.Scorsone@wegmans.com

### Historian

Jake Hall (585) 869-5125  
jhall@proairplus.com

### Membership

George Herman (585) 219-5908  
george@hermanhvac.com

### YEA

Matt Kremers (585) 398-8018  
mkremers@mcsmms.com

### Student Activities

Rob Hudson, PE (585) 341-3187  
rhudson@ibceng.com

## Board of Governors

George Herman (3)  
(585) 219-5908  
George@hermanhvac.com

Marjani Wilson (2)  
(585) 402-7069  
mwilson@labellapc.com

Jeff Wiedrick (2)  
(585) 498-7919  
jwiedrick@bergmannpc.com

Matt Kremers (2)  
(585) 398-8018  
mkremers@mcsmm.com

Bret Fryover (1)  
(585) 427-8888  
fryoverb@erdmananthony.com

Chris Bove (1)  
(585) 202-1222  
(586)chrisb@rl-stone.com

### Education

Bill Murray (585) 641-7121  
bmurray@ec4b.com

### Newsletter Editor

Scott Edwards (585) 301-6591  
ashraerocnews@gmail.com

### Attendance

Bret Fryover (585) 427-8888  
fryoverb@erdmananthony.com

### Publicity

Mark Kukla (585) 232-3440  
mark@airsystemsbalancing.com

### Research Promotion Co-Chairs

Matt Devlin  
matthew.devlin@xerox.com  
Zac Hess (585) 232-5137  
zhess@bergmannpc.com

### Webmaster

Steve Dear (585) 325-1290  
sdear@crosbybrownlie.com

### Nominating / Past President

Bill Clark (585) 303-0729  
william.clark@dayautomation.com

### Buyer's Guide

Pete Bukowski (585) 398-8018  
pbukowski@mcsmms.com

# PAOE

**Chapter:** ROCHESTER (011)  
**Chartered:** 11/30/1955



Members  
(CIQ)



Chapter  
Reports



Chapter  
Meetings



PAOE



Chapter  
Settings



Expanded

Achievements

▶ Chapter Operations	Par: 1200	Min Points: 600	<b>Total Points: 455</b>
▶ Chapter Technology Transfer	Par: 1050	Min Points: 550	<b>Total Points: 0</b>
▶ Electronic Communications	Par: 600	Min Points: 250	<b>Total Points: 50</b>
▶ Government Affairs	Par: 650	Min Points: 500	<b>Total Points: 800</b>
▶ Historical	Par: 300	Min Points: 100	<b>Total Points: 505</b>
▶ Membership Promotion	Par: 800	Min Points: 500	<b>Total Points: 775</b>
▶ RP	Par: 1050	Min Points: 800	<b>Total Points: 1045</b>
▶ Student Activities	Par: 500	Min Points: 300	<b>Total Points: 100</b>

## Like us on Facebook!

Visit our new Facebook page by searching for “ASHARE Rochester” on Facebook. Any ideas for additions or improvements email to Mark Kukla at [mark@airsystemsbalancing.com](mailto:mark@airsystemsbalancing.com). Keep up to date with current events and photos from recent meetings.

### Mission Statement

ASHRAE will advance the arts and sciences of heating, ventilation, air conditioning, refrigeration and related human factors to serve the evolving needs of the public and ASHRAE members.



### Vision Statement

- will be the global leader in the arts and sciences of heating, ventilation, air conditioning and refrigeration.
- will be the foremost, authoritative, timely and responsive source of technical and educational information, standards and guidelines.
- will be the primary provider of opportunity for professional growth, recognizing and adapting to changing demographics, and embracing diversity.

Shaping Tomorrow's  
Built Environment Today

# President's June Message

June Newsletter 2019  
President's Message

Another year, and with great thanks to Jim Browe and Kacie Hoffman, we had another very successful annual Golf/Picnic Outing at Ravenwood. Special thanks to all our sponsors as well! Their support goes beyond the success of the golf outing, for that we are truly grateful.

The 2108/19 ASHRAE Rochester board is comprised of several individuals; all volunteers. As an organization we are fortunate to be able to fill 39 positions with 26 members. Everyone contributed to our success and helped drive the greater ASHRAE mission forward, that is, 'To advance the arts and sciences of heating, ventilating, air conditioning and refrigerating to serve humanity and promote a sustainable world.'

From our 7 monthly lunchtime meetings with technical presentations and PDH credits, our special events including the Clambake, Valentine's Dinner Dance, Golf/Picnic Outing, YEA outings, and Ski Day, and our many committee sponsored events that happen behind the scenes, a tremendous commitment from everyone involved provided for that success. For that I offer my sincere gratitude for their time and commitment.

Please continue to check out our website at <http://rochester.ashraechapters.org/> for information on upcoming chapter meetings, current officer list and contact information, chapter newsletters, and more! Also take a minute and like us on Facebook at ASHRAE Rochester.

Thank you!!! Enjoy your summer, we'll see you back in September for our Clambake.

Paul Kenna, P.E.  
2018-2019 President  
Rochester Chapter

# Highlights from May ASHRAE Picnic / Golf Tournament



*We would like to thank all of our sponsors from last month's ASHRAE Golf Tournament & Picnic. Your generosity every year is so appreciated and because of you, our event is always a success.*

*Have a great summer!*

## Gold Sponsorship

ABB  
ABR Wholesalers  
Armstrong Fluid Technology  
Bergmann  
Captiveaire  
Carrier  
Clark Patterson Lee  
Day Automation  
Dynamic Product Solutions  
EC4B  
Greenheck  
Guckian Energy  
H&V Sales  
IBC Engineering  
J.T. Mauro Co., Inc.  
J.W. Danforth Company  
J.W. Swanson & Associates  
Johnson Controls  
LG  
Logical Control Solutions  
Loren Cook  
M/E Engineering  
Mech Tech HVAC, Inc.  
Modular Comfort Systems  
Northern Air System & Sheetmetal Division Inc.  
Pathfinders Engineers, LLC  
Pipitone Enterprises  
Popli Design Group  
Postler & Jaeckle  
Pres Services  
Price Industries  
R.F. Peck Co., Inc.  
RenewAire  
R.L. Kistler  
RL Stone  
R.P. Fedder Corporation  
Trane  
Turner Engineering  
Ventrol  
V.J. Stanley

## Silver Sponsorship

Buckpitt  
Herman HVAC  
Labella Associates  
M.I.S of America  
Siemens  
U&S Services  
Victaulic

## Platinum Sponsorship

*Gray Metal Products, Inc.*

## Bronze Sponsorship

Erdman Anthony  
Madco Mechanical

## Major Door Prizes

Air Systems Balancing & Testing  
Crosby Brownlie  
John W Danforth  
LG  
R.F. Peck Co. Inc.  
Stark Tech Group





## Job Opening

### **HVAC Estimator/Application Engineer**

The R.F. Peck Co., Inc is a commercial HVAC manufacturer's representative firm who has been in business for over 50 years. We specialize in the distribution, filtration, measurement and control of airflow, as well as heating, ventilating and air conditioning equipment sales.

Our continued success has created a need for an additional inside support/application engineer in the Rochester, New York area. We require an energetic and driven person that has engineering background or HVAC experience that is willing to grow into this position. The job consists of: pricing, mechanical blueprint reading, takeoffs and submittal preparation. We offer training and a competitive payment and benefits package.

If you are interested please send your resume to:

Jim Browe

[jbrowe@rfpeck.com](mailto:jbrowe@rfpeck.com)

R.F. Peck Co., Inc.  
889 Atlantic Avenue  
Rochester, NY 14609  
[www.rfpeck.com](http://www.rfpeck.com)

# Rochester Chapter

## Committee Chairs Updates

### Research Promotion

#### ***Research Promotion Report***

The end of the ASHRAE 2018-2019 Fundraising Campaign is fast approaching and will be coming to a close at the end of the month (June 30<sup>th</sup> is last day contributions will be received). Don't miss out on supporting this year's campaign and helping our chapter meet our RP goal for 2018-2019, visit the website at the bottom of this page to make a contribution. We have already received nearly \$15,000 in donations this year, but are still shy of our chapter goal of \$21,225. As always, I would like to extend my sincerest thanks to you for your support of ASHRAE Research. It's because of your support that ASHRAE is able to fund more than 80 research projects world wide, including some within our region.

Thanks again for all your support and I look forward to seeing you at the next Rochester Chapter Meeting.

Matt Devlin, PE

RP Chair

[www.ashrae.org/contribute](http://www.ashrae.org/contribute)







## **WIA – Rochester Chapter Women in ASHRAE**

### **UPCOMING EVENTS**

- **WiA Book Club @ Erdman Anthony**

Tuesday, June 25th, 12 Noon

**UPCOMING BOOK: “Workplace Poker” by Dan Rust**

Available at Monroe County Library: <https://catalogplus.libraryweb.org/>

- **ENR On-Demand Webinar: “On/Off Ramps: Keeping Talented AEC Women Engaged”**

Tuesday, July 23rd, 7:30AM ET

Link for registering:

<https://www.enr.com/events/764-on-ramps-off-ramps-keeping-talented-aec-women-engaged>

Please email Jaimee Wilson ([jwilson@pathfinder-ea.com](mailto:jwilson@pathfinder-ea.com)) if you would like to view the webinar with other local Women in ASHRAE. More information about the webinar can be found at the end of the WiA announcements.

For questions or suggestions regarding future WIA events or books, please contact Jaimee Wilson:

[jwilson@pathfinder-ea.com](mailto:jwilson@pathfinder-ea.com)

## On Ramps/Off Ramps: Keeping Talented AEC Women Engaged

There has been intense debate over why highly-qualified women are either leaving the construction sector or dropping out of their technical and management-track careers. Are the complex demands of work and modern family life the problem? Or is it gender-based stereotyping or something else?

[During this webinar](#), our panelists will provide their research findings and insights on the following topics:

- Why the turnover rate for women in engineering fields higher than men, despite increased efforts to improve recruiting and retention
- The major hurdles for women to remain in the profession
- How to keep your career on a steady advancement pace even with short term gaps
- Changing the paradigm: What leaders should do to change the culture with the emphasis on retention

### Speakers:



**Angela H. Cotie**  
Project Executive  
*Gilbane Building Co., Houston*



**Laura Royster**  
Senior Consultant  
and Managing  
Partner  
*Saxon-Hamilton*



**Romila Singh, Ph.D**  
Associate Professor  
- Human Resource  
Management  
*Sheldon B. Lubar  
School of Business,  
University of  
Wisconsin-  
Milwaukee*



Moderated By:  
**Debra Rubin**  
Editor-at-Large -  
Management,  
Business and  
Workforce  
*ENR*



Sponsor Introduction  
By:  
**Suzanne Motica**  
VP of Services  
Delivery  
*InEight*

## The Benefits of an ASHRAE Certification

### SHINE IN A RISING FIELD

Certification validates critical job knowledge, skills and abilities in a given practice area.

### GAIN A COMPETITIVE EDGE

ASHRAE certifications are recognized by over 35 national, state and municipal entities.

### STAND OUT

Use the ASHRAE Certified logo and designation—e.g. Curtis Smith, BEAP, BEMP—in email signatures, professional networking and business cards to enhance your reputation.

### ASHRAE WILL SING YOUR SUCCESS

Certificants and their employers are listed on the website and in ASHRAE *eSociety*.



## 5 Easy Steps to Earn and Maintain an ASHRAE Certification

### 1. Read the *Candidate Guidebook*

Visit [www.ashrae.org/certification](http://www.ashrae.org/certification) and download the guidebook for the program in which you are interested.

### 2. Complete the Application

Complete the online application at [www.ashrae.org/certification](http://www.ashrae.org/certification). Membership in ASHRAE is not a requirement for certification.

### 3. Schedule an Examination

BCxP, BEAP, BEMP, CHD, HBDP, HFDP and OPMP examinations are offered at over 300 conveniently located computer-based testing centers worldwide. Candidates may schedule an examination appointment online or by telephone.

### 4. Review Available Resources

The *Candidate Guidebook* for a program identifies available resources, including practice exams, that may help candidates gain an understanding of the body of knowledge that the examination tests. Purchase of books or course registrations is not a prerequisite to taking any ASHRAE certification examination.

### 5. Renew the Certification

Each certification is renewable every three years. To retain certification, each certification holder must earn 45\* Professional Development Hours (PDHs) during the three year period following initial certification or the last renewal.

\*BCxP and BEAP require 50 PDHs.

Schedule an exam at one of over **300 testing centers** worldwide  
**TODAY!**

To learn more or apply, please go to  
**[ashrae.org/certification](http://ashrae.org/certification)**

## ASHRAE Certification

Already more than 2,750 certifications earned in seven key built-environment fields.

## Advance Your Career Today



**Validation. Pride. Recognition.**

*"Because of the high level of expertise, professionalism and ethics demonstrated by ASHRAE, achieving certification under their established requirements implies one of the highest levels of competence and knowledge available in the industry."*

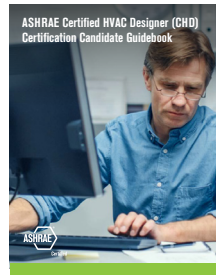
**Jeffrey G Ross-Bain, BEMP, Ross-Bain Green Building, LLC**



ASHRAE, the standard setter for sustainable building performance and system design and operation, validates through certification the critical knowledge, skills and abilities of professionals in seven key, built-environment fields.

Recognized by over 35 national, state and local government bodies – and with over 2,750 certifications earned – ASHRAE certifications increasingly have become the must-have credential for built-environment professionals.

## NEW! Certified HVAC Designer (CHD)



Recognizing an industry need and demand for qualified HVAC designers, ASHRAE developed the Certified HVAC Designer (CHD) certification.

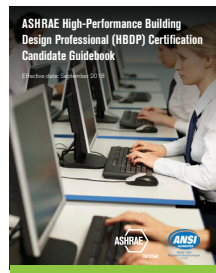
The CHD certification validates competency of an HVAC Designer, working under the responsible charge of an engineer, to *design HVAC systems to meet building/project requirements, including load calculations, equipment selection and sizing, mechanical equipment room design, duct and piping design and layout for the development of HVAC plans for permit and construction.*

In an “Industry Need” survey, ASHRAE Member respondents agreed:

- “The level of competence among HVAC Designers varies greatly” (95%)
- “HVAC Designer certification is a worthwhile professional development goal” (82%)
- “It is a tool to identify competent new hire prospects” (74%)

Application for the CHD launches March 1, 2019.

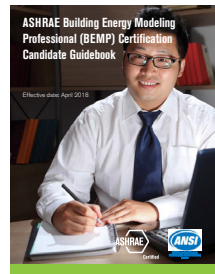
## High-Performance Building Design Professional (HBDP)



The HBDP certification validates competency to *design and integrate sustainable HVAC&R systems into high performing buildings.*

Today’s building design market requires use of ground-breaking technologies in new and existing structures to meet the need of building owners.

## Building Energy Modeling Professional (BEMP)

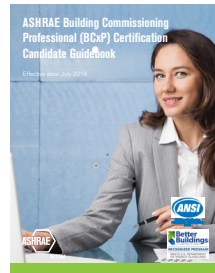


The BEMP certification validates competency to *evaluate, select, implement, calibrate and interpret the results of energy modeling software when applied to new and existing building and systems energy performance.*

The BEMP certification complements ASHRAE’s Building Energy Quotient (BuildingEQ) program by helping to ensure that only qualified practitioners can submit As Designed Workbooks to receive building ratings from ASHRAE. Only those certified as BEMPs, and Professional

Engineers licensed in the jurisdiction where a BuildingEQ project is located, may submit the As Designed Workbooks to ASHRAE. Like BEAPs who may submit In Operation BuildingEQ Workbooks, BEMPs may display the BuildingEQ Certified Provider logo with descriptions of their services.

## Building Commissioning Professional (BCxP)



The BCxP certification, recognized by the U.S. Department of Energy (DOE) as meeting the Better Buildings Workforce Guidelines (BBWG), validates competency to *lead, plan, coordinate and manage a commissioning team to implement commissioning processes in new and existing buildings.*

Many building owners look for ways to lower energy bills, reduce change orders during construction, avoid premature equipment replacement costs, and create safer and healthier buildings. Building commissioning measures and tunes up performance of existing buildings and ensures that new buildings begin their lifecycle at optimal productivity.

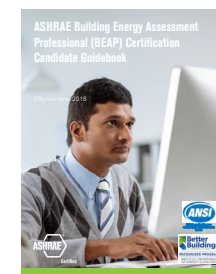
## Healthcare Facility Design Professional (HFDP)



The HFDP certification validates competency to *incorporate standards, guidelines as well as unique healthcare facility requirements and design principles in HVAC system design.*

Growing numbers of aging medical facilities, advances in technology, shifting environmental requirements and an increasingly older population have created a critical need for expansion and renovation of healthcare facilities.

## Building Energy Assessment Professional (BEAP)



The BEAP certification, recognized by the U.S. Department of Energy (DOE) as meeting the Better Buildings Workforce Guidelines (BBWG), validates competency to *assess commercial building systems and site conditions, analyze and evaluate equipment and energy usage, and recommend strategies to optimize building resource utilization.*

The BEAP certification is integral to ASHRAE’s Building Energy Quotient (BuildingEQ) program by helping to ensure that only qualified practitioners can submit In Operation Workbooks to receive building ratings from ASHRAE. Only those certified as BEAPs, or Professional Engineers licensed in the jurisdiction where a BuildingEQ project is located, may submit the In Operation Workbook. Additionally, only BEAPs (and BEMPs) may display the BuildingEQ Certified Provider logo with descriptions of their services.

## Operations & Performance Management Professional (OPMP)



The OPMP certification validates competency to *manage facility operations and maintenance to achieve building performance goals, including those related to indoor environmental quality, health and safety.*

Today’s complex buildings can fade from green to gray when building operators don’t realize the full potential of the systems they manage. Staying current with the latest facility operation strategies and technologies can reduce energy use in buildings by 10% to 40%.

## Value of Earning Your ASHRAE Certification

In a recent “Value of Certification” survey, this is what ASHRAE-certified professionals had to say:

- *ASHRAE Certification validates my level of specialized knowledge and ability (89%).*
- *ASHRAE Certification helps differentiate me from my peers (82%).*
- *In my field, ASHRAE Certification has provided me with greater professional recognition (73%).*



# ASHRAE Membership Application

Save Time. Join Online at [www.ashrae.org/join](http://www.ashrae.org/join)

Shaping Tomorrow's  
Built Environment Today

Prices shown are valid from July 1, 2017 through June 30, 2018

## MEMBERSHIP

### WHO ARE ASHRAE MEMBERS?

Members are represented by consulting engineers, mechanical contractors, building owners, employees of manufacturing companies, educational institutions, research organizations, government, architects, students or anyone concerned with HVAC&R for the built environment.

### WHICH MEMBER TYPE IS RIGHT FOR YOU?

ASHRAE has three grades of membership awarded to applicants based on their experience and participation in the industry. Before you apply and select a member grade, we encourage you to visit the ASHRAE website to see the member grades and their corresponding member benefits. Prices shown are in US currency.

#### Member (\$206)

Available to anyone with 12 years or more ASHRAE approved experience in the HVAC&R industry.

#### Associate Member (\$206)

Available to anyone with less than 12 years of ASHRAE approved experience in the HVAC&R industry.

#### Affiliate Member

(\$52 first year, \$78 second, \$103 third)

Affiliate grade is for individuals who are new to ASHRAE (no previous membership in ASHRAE) and are age 30 or younger. It provides a great beginning for young professionals who wish to become involved in ASHRAE. (Does not include the annual member benefit of the ASHRAE Handbook).

Privacy Policy: By supplying your email address you are agreeing to receive electronic communications from ASHRAE, with the knowledge that you may opt-out of certain electronic communication once you become a member. Please visit [ashrae.org/privacypolicy](http://ashrae.org/privacypolicy) for additional information.

## MEMBER BENEFITS AND RESOURCES

### PUBLICATIONS & RESOURCES

- ASHRAE Handbook (Available to Members and Associates) in print or PDF, as well as a 12 month complimentary subscription to the Handbook Online, which provides online access to the most recent 4 volumes of the Handbook series.
- Monthly ASHRAE Journal in print and online
- Quarterly High Performing Buildings magazine in print and online
- e-Industry and eSociety electronic newsletters
- Access to members-only resources through ASHRAE.org, including the ASHRAE Journal and ASHRAE Research archives
- Discounts on over 300 of the industry's leading technical publications

### PROFESSIONAL EDUCATION AND CAREER DEVELOPMENT

- Discounted registration for education courses through the ASHRAE Learning Institute, as well as ASHRAE certification programs
- Earn PDHs/CEUs/AIA LUs to maintain your professional designation/license with courses, seminars, and webcasts
- Gain industry knowledge, communication, and management skills by participating in ASHRAE technical programs or committees
- Post jobs or seek employment utilizing [www.ASHRAEjobs.com](http://www.ASHRAEjobs.com)

### NETWORKING

- Connect locally, regionally and internationally with over 57,000 members in over 180 chapters worldwide
- Learn, share, and grow at the Annual and Winter Conferences, on ASHRAE technical committees, and [ASHRAExChange.org](http://ASHRAExChange.org)
- Participate in your local chapter or regional meetings and events

Code of ethics: By submitting this application you are agreeing to abide by the ASHRAE Code of Ethics, found at [ashrae.org/codeofethics](http://ashrae.org/codeofethics).

Completed applications or questions can be sent to ASHRAE via  
email: [membership@ashrae.org](mailto:membership@ashrae.org) | fax: 678-539-2129 | phone: 1-800-527-4723 or 404-636-8400  
mail: 1791 Tullie Circle, NE, Atlanta, GA 30329

1. Contact Information.  Mr.  Miss  Ms.  Mrs.  Dr. \*Birthday (required) \_\_\_\_\_ / \_\_\_\_\_ / \_\_\_\_\_  
 (Month) (Day) (Year)

Name \_\_\_\_\_  
 (First) (Middle) (Last) (Designation)

Primary Address This is a  Home  Business Alternate Address This is a  Home  Business

Company Name \_\_\_\_\_ Company Name \_\_\_\_\_

Address \_\_\_\_\_ Address \_\_\_\_\_

City \_\_\_\_\_ State/Province \_\_\_\_\_ City \_\_\_\_\_ State/Province \_\_\_\_\_

Zip/Postal \_\_\_\_\_ Country \_\_\_\_\_ Zip/Postal \_\_\_\_\_ Country \_\_\_\_\_

E-mail \_\_\_\_\_ Alternate E-Mail \_\_\_\_\_

Telephone \_\_\_\_\_ Cell \_\_\_\_\_ Preferred Chapter  Home  Business  Other \_\_\_\_\_

Name/Chapter of referring member (if applicable): \_\_\_\_\_

2. Member Grade.  
 For additional information on member grades and benefits see reverse or visit ashrae.org.

Member — \$206 (must complete section 2a)

Associate Member — \$206

Affiliate Member — \$52 first year/\$78 second/\$103 third (new members, under 30)

Reinstate my previous membership. Previous member number: \_\_\_\_\_

2a. Biographical Information. ONLY Member Grade applicants must complete this section. Use additional sheets or attach resume if necessary. Associate and Affiliate grade applicants do not complete this section.

School	Location	Dates of Attendance	Degree/Course of Study
Educational Record			
Employer	Location	Dates of Employment	Position/Title
Qualifying Work Experience			

Professional Engineering Registration Information License Number \_\_\_\_\_ Date Issued \_\_\_\_\_ Field of Registration \_\_\_\_\_ Location of Registration \_\_\_\_\_

3. Demographics. Please answer the questions by entering the codes in the space provided.

Which best describes your title? \_\_\_\_\_

B- President	S- Purchasing Agent
C- Partner	T- Draftsperson
D- Associate	U- Estimator
E- Owner	W- Technician
F- Vice President	X- Instructor
G- VP Eng. Chief Engineer	Professor
K- Design Eng./Designer	Y- Student
L- Proj./Application Eng.	Z- Librarian
O- Facility Eng./Mngr.	ZZ- Other
P- R&D Eng.	
R- Sales Engineer	

Which best describes your firm? \_\_\_\_\_

11- Consulting Eng.	51- Manufacturer
12- Architectural & Eng	61- Manufacturer's Rep.
15- Design/Build	62- Sales Engineering
21- Contractor	71- Wholesaler/Dist.
26- Property Mgmt & Dev.	83- Library
31- Industrial Facility	84- Tech/Prof Assoc.
41- Commercial Facility	85- Trade Assoc.
42- Gov't, Health, Education	86- Student
43- Utility	91- Other/Misc.

Which best describes your function? \_\_\_\_\_

1- Design/Application	5- Sales
2- Manufacturing	6- Research
3- Maintenance Operations	7- Teaching
4- Management	8- Other

4. Areas of HVAC&R Interest. Enter the code for your area of interest from the list below:  
 Code: \_\_\_\_\_

Heating	Refrigeration
A- Hydronic	S- Unitary Refrigeration
B- Forced Air	T- Commercial Refg.
C- Steam	U- Industrial Refg.
D- Process	V- Process Refg.
E- Service Water	W- Low Temp (<60F)
F- Solar	X- Refg. Components
G- Radiant	
	General Areas
Ventilating & AC	1- Controls/Instrumentation
H- Air Cleaning	2- Heat Transfer Fluid Flow
J- Industrial	3- Pipes, valves, fittings
K- Clean/Computer Room	4- Refg. & Lubrications
L- AC Equip. <20 tons	5- Sound & Vibration
M- AC Equip. 20-200 tons	6- Insulation
N- AC Equip. > 200 tons	7- Energy Recovery
P- Air Handling Systems	8- Food Application
Q- Evaporative Coolers	9- Health, Safety
R- IEQ	10- Commissioning

5. Handbook Preference. New Members and Associate Members receive a 12 month complimentary subscription to the Handbook Online, which includes access to the most recent 4 volumes of the Handbook. If you would like a print copy of the ASHRAE Handbook in addition to this subscription, please chose either IP or SI version below. Handbooks are printed and mailed to members annually in June.

I-P (inch/pound units), print with PDF

SI (metric units), print with PDF

PDF only (I-P & SI)

6. Privacy Notice If you DO NOT wish to receive 3rd party physical mailings, please check here.

7. Include chapter membership dues:  Dues Amount: \_\_\_\_\_ Paying chapter dues is encouraged but not mandatory, and can be paid separately to the Chapter at anytime. Contact chapter officers for amount. Add this amount to your Society dues in the 'Total Amount' of the payment section below.

8. Payment.  Visa  Mastercard  Amex  Diner's Club  Check/money order\*\*

Card # \_\_\_\_\_ Expiration Date \_\_\_\_\_ / \_\_\_\_\_  
 (Month) (Year)

Total Amount: \_\_\_\_\_ Signature \_\_\_\_\_

CHECKS WILL BE ACCEPTED IN US AND CANADIAN FUNDS. CREDIT CARD PAYMENTS ACCEPTED IN US FUNDS ONLY

# Application for Student Membership



Join online at [www.ashrae.org/students](http://www.ashrae.org/students)

At the student branch level, you'll enjoy meeting other students with similar interests – if your school hasn't yet started a student branch, take charge and contact a faculty member and ask for help on getting started!

## Why ASHRAE?

- Discounts on publications, conferences, and continuing education opportunities
- Society and chapter-level scholarships for both undergraduate and graduate engineering students
- Discounts for student members on select publications
- Digital access to the monthly ASHRAE Journal and the quarterly High Performing Building Magazine
- Participate in events with your local ASHRAE Chapter
- Find internships and jobs at [jobs.ashrae.org](http://jobs.ashrae.org)
- Senior Undergraduate Project Grant Program
- Discounted ASHRAE Annual and Winter Conference registration (AHR Expo, Student Program, Technical Sessions)
- Gain essential skills not taught in class
- Make great new friends!

## Developing Economies Program for Students

Students who reside in countries categorized as "Low Income" and "Lower Middle Income" developing economies by the World Bank List of Economies statistics are eligible to participate in this program. Students in this program receive all the benefits of regular student membership, including online access to the ASHRAE Journal (digital access only - participants will not receive a monthly printed copy of the ASHRAE Journal).

Visit [www.worldbank.org](http://www.worldbank.org) for a listing of qualified countries: **Low Income** and **Low Middle Income** only. If you currently reside in one of the countries listed in those categories, simply check the box marked 'Developing Economies Program' in the 'Purchases' section of this application.

**1. Contact Information.**  Mr.  Miss  Ms.  Mrs. \*Birthday (required) \_\_\_\_\_ / \_\_\_\_\_ / \_\_\_\_\_  
 (Month) (Day) (Year)

Name \_\_\_\_\_  
 (First) (Last)

Primary Address (where all correspondence will be mailed) Alternate Address  
 Address \_\_\_\_\_ Address \_\_\_\_\_  
 \_\_\_\_\_

City \_\_\_\_\_ State/Province \_\_\_\_\_ City \_\_\_\_\_ State/Province \_\_\_\_\_  
 Zip/Postal \_\_\_\_\_ Country \_\_\_\_\_ Zip/Postal \_\_\_\_\_ Country \_\_\_\_\_

E-mail \_\_\_\_\_ E-mail \_\_\_\_\_

Phone: \_\_\_\_\_ Phone: \_\_\_\_\_

I would like to receive occasional student updates via email. | I would like to participate in the \_\_\_\_\_ ASHRAE Chapter.

**2. Student Branch Information.** School Name: \_\_\_\_\_

Address: \_\_\_\_\_

City: \_\_\_\_\_ State/Province: \_\_\_\_\_ Postal Code \_\_\_\_\_

**3. Education.** Classification: Freshman  Sophomore  Junior  Senior  Masters/PhD.

Full time  Part time  Degree: \_\_\_\_\_ Expected Graduation Date: \_\_\_\_\_  
 (MM/DD/YYYY)

**4. Sponsor Information.**

All student applicants must have the name and member number of an ASHRAE member serving as their student sponsor. If your Student Branch Advisor is an active Associate or Member of ASHRAE, he/she can serve as your sponsor. If you need assistance locating a sponsor, please email [students@ashrae.org](mailto:students@ashrae.org) or call 678-539-1212. Also, you must list the name, phone and email address of your faculty advisor or course instructor.

Sponsor Name: \_\_\_\_\_ ASHRAE Member #: \_\_\_\_\_

Advisor/Instructor: \_\_\_\_\_ Email \_\_\_\_\_

**5. Purchases.**

Student Membership- Regular: \$21  Student Membership- Developing Economies Program (see reverse for qualifications) \$11

Printed Edition of the current ASHRAE Handbook:  I-P  SI Student Member Price: \$49.00

PDF Version of the ASHRAE Handbook (Includes both I-P and SI Units) Student Member Price: \$39.00

ASHRAE Handbook Online - One Year Subscription to all four volumes of the Handbook series: \$33.00

\*Additional publications are available at student member discounts at [ashrae.org/studentbookstore](http://ashrae.org/studentbookstore)

**6. Payment.**  Visa  Mastercard  Amex  Diner's Club  Check/money order\*\*

Card # \_\_\_\_\_ Expiration Date \_\_\_\_\_ / \_\_\_\_\_  
 (Month) (Year)

Total Amount: \_\_\_\_\_ Signature \_\_\_\_\_

CHECKS WILL BE ACCEPTED IN US AND CANADIAN FUNDS. CREDIT CARD PAYMENTS ACCEPTED IN US FUNDS ONLY





Rochester Chapter - ASHRAE  
 Board of Governors Meeting  
 May 17th, 2019 7:30 AM - 8:30 AM  
 PRES Energy, One Grove St, Pittsford, NY

AGENDA

- Call to Order Paul Kenna
- Roll Call Scott Edwards
- 

X	Paul Kenna	President / CRC Alternate
X	Tom Streber	President Elect / Program
X	Mike Benedict	Treasurer
X	Scott Edwards	Secretary & Newsletter Editor
X	Bill Clark	Immediate Past President & Nominating / CRC Delegate
	George Herman	Board of Gov. (3) & Membership Promotion Chair (MP)
X	Marjani Wilson	Board of Gov. (2) & Grassroots Government Advocacy Co-Chair
	Jeff Wiedrick	Board of Gov. (2) & Chapter Technology Transfer Chair (CTTC)
X	Matt Kremers	Board of Gov. (2) & Young Engineers in ASHRAE Chair (YEA)
X	Bret Fryover	Board of Gov. (1) & Attendance Co-Chair
	Chris Bove	Board of Gov. (1)
	Tim Duprey	Attendance Co-Chair
	Jake Hall	Historian Chair
	Matt Devlin	Research Promotion Co-Chair (RP)
X	Zachary Hess	Research Promotion Co-Chair (RP)
	Rob Hudson	Student Activities Chair (SA)
	Al Rodgers	Awards & Recognition Chair
	Bill Murray	Education
	Mark Kukla	Publicity
	Jim Browe	Picnic/Golf Chair
	Pete Bukowski	Buyers Guide
	Jody McGarry	Valentine's Dinner Dance
	Mike Nohle	Refrigeration Co-Chair
	Sam Scorsone	Refrigeration Co-Chair
	Jaimee Wilson	Women in ASHRAE, Chair
	Michelle Sommerman	Women in ASHRAE

- Review and Approval of Previous Meeting Minutes All
  - Motioned by Bret Fryover, second by Mike Benedict

- Treasurer Report Mike Benedict
  - Financials from March (\$218.75) and April (\$119.26) Meeting
  - Still need to reconcile VDD report with Jodi.
  - Bank Accounts as follows:
    - 4/30/2019 \$ 24,526.86 Business Checking
    - 4/30/2019 \$ 20,250.55 Rewards Checking
    - 12/2018 \$ 46,826.61 Wells Fargo
  - \$10 expense payment pending to Quinn Rowland for glue sticks for a WIA event. \$50 was allocated for this event. \$35 was spent (not including the \$10 above). Paul Kenna to send Mike Benedict email acknowledgment.
  - Wells Fargo - updated the authorized users of the account to the President, President Elect and Treasurer. Mike B just needs Bill Clark's signature, but all paperwork is complete.
- President Elect/Program Tom Streber
  - May - Picnic and Golf Outing
  - Will begin planning for 2019-2020 kickoff meeting. Date sometime in late July or early August
  - Research promotion training, Sept 6-7 for our region
- Attendance Bret Fryover
  - April Reservation Summary - 68 attendees.
  - May - Golf registrations are at complete and registration is full
    - i. 50/50 to sell on Monday during the event
- CTTC Report Jeff Wiedrick
  - No submissions this year
- Membership Report George Herman
  - No new report
  - MP Training June 23<sup>rd</sup>, Kansas City, MO, Register by June 7<sup>th</sup>
- Student Activities Report Rob Hudson
  - Student presentations have wrapped up. No additional presentations planned
- Education Report Bill Murray
  - No Report
- YEA Report Matt Kremers
  - Frisbee golf is next event Monday. So far light attendance.
- Awards & Recognition Report Al Rodgers
  - We will present at the annual golf/picnic event
- Resource Promotion Report Zac Hess / Matt Devlin
  - On track for goal
  - 50/50 raffle for the golf/picnic on Monday may follow a closest to the pin format
- Refrigeration Report Mike Nohle
  - No new report
  - Status of RIT visit. Credit for PAOE student contact

- Grassroots Government Advocacy Report Marjani Wilson
  - Day on the Hill is scheduled for June 4<sup>th</sup> in Albany. They are currently having biweekly conference calls in support of this effort. Anyone wishing to be part of this event please let Marjani know.
  
- Women in ASHRAE Jaimee Wilson
  - No new report
  
- Newsletter Report Scott Edwards
  - Still looking for newsletter editor for next year
  - June newsletter, reminder will be sent out after the golf tournament
  
- Buyers Guide Pete Bukowski
  - No New Report
  - Discuss for next year
  
- Historian Report Jake Hall
  - No report
  
- Publicity Report Mark Kukla
  - As always, please send any meeting pictures to Mark
  
- Website Report Tim Duprey
  - Please direct updates to Tim
  - Mtg Reservation System - no new report
  
- Nominating Report Bill Clark
  - RES symposium went well
  - Incoming BOG and executive committee set for 2019/2020
    - President - Tom Streber
    - President Elect - Mike Benedict
    - Treasurer - Scott Edwards
    - Secretary - Matt Kremers
    - BOG 3 - Jeff Wiedrick
    - Marjani Wilson
    - BOG 2 - Chris Bove
    - Bret Fryover
    - BOG 1 - Chris Hartmann
    - Zac Hess
  
- Valentines Dinner Dance Report Jody McGarry
  - Financials not reconciled yet.
  
- Golf/Picnic Report Jim Browe
  - Monday, 5/20, 11 am, Ravenwood
  
- Presidential Award of Excellence (PAOE)
  - Please update on website

- New Business:
  - We haven't sponsored other CRC's in past years
  - CRC is in August 15<sup>th</sup> thru 17<sup>th</sup> in Buffalo
  - PAOE Points - Are there any sustainability projects that we can use for PAOE points?  
Paul Kenna to look into more.
  - Clambake for September, tentative for either September 9<sup>th</sup> or 16<sup>th</sup>
- Old Business:
  - Removal of Jeff Ellis from PayPal
  - 2017-18 Audit - Paul K to send resolution for approval for June BOG meeting
- Next BOG meeting to be announced
- Adjourn, 8:09am



FOR IMMEDIATE RELEASE

**Media Contact:**

Sherri Simmons

404-446-1660

[ssimmons@duffey.com](mailto:ssimmons@duffey.com)

## **ASHRAE and AIA Sign MoU to Join Forces to Improve Sustainability**

**ATLANTA (May 28, 2019)** – **ASHRAE** and the **American Institute of Architects** (AIA) have signed a new Memorandum of Understanding (MoU) formalizing the organizations' relationship.

The MoU was signed by 2018-2019 ASHRAE President Sheila J. Hayter and AIA President William J. Bates on May 22. The agreement defines parameters on how the two societies will collaborate more closely to continue promoting the advancements of a more sustainable built environment.

Areas of potential collaboration include, but are not limited to: general advocacy; research; technical committee coordination; joint conferences and meetings; young professionals' development; training and education programs; publication distribution; community service and diversity and inclusion.

"ASHRAE is pleased to establish this cooperative agreement with AIA as we seek to leverage the synergies of our organizations in accelerating our common objective of advancing the built environment through sustainable practices," said 2018-2019 ASHRAE President Sheila J. Hayter, P.E. "This MoU formalizes a long-standing collaboration between ASHRAE and AIA. We appreciate AIA's support over the years and look forward to the continued opportunity to work together."

"The AIA and ASHRAE Memorandum of Understanding continues to advance our shared commitment to sustainability in the built environment," said AIA 2019 President William J. Bates, FAIA. "By working together, members of AIA and ASHRAE will benefit from collaborative events, common values, best practice sharing, and joint advocacy efforts."



# WELCOME TO KANSAS CITY!

A letter of invitation from Blake Ellis, General Chair of the 2019 ASHRAE Annual Conference

## ***I'm Goin' to Kansas City, Kansas City Here I Come!***

Everyone should be signing the tune "*I'm Goin' to Kansas City!*" because ASHRAE is headed back to Kansas City for the 2019 Annual Conference. The Kansas City Chapter, the 6<sup>th</sup> oldest ASHRAE chapter, and Region IX invite you to our vibrant city for education, networking and fun! The June 22-26, 2019 Annual Conference is in the heart of our downtown, just two blocks from the FREE streetcar system and entertainment district. Kansas City is a great location to kick off ASHRAE's 125<sup>th</sup> year with the fifth ASHRAE conference at the historical Muehlebach Hotel, which is now part of the Marriott.

The conference begins with the Welcome Party at the National World War I Museum and Memorial with one of the best views of the Kansas City skyline. This recognizable part of Kansas City is America's leading institution dedicated to remembering, interpreting and understanding the Great War and its enduring impact on the global community. The museum maintains the Liberty Memorial as a beacon of freedom and symbol of the courage, patriotism, sacrifice and honor of all who served in World War I.

ASHRAE last visited Kansas City in 2003 and every tour highlights a location that is new or has been renovated since that conference. We've also added a new twist! In addition to general and technical tours, we have added a new category, the hybrid tours which are general tours with technical, back-of-house information, led by your ASHARE Host Committee.

- **General Tours:** The Museums at 18th & Vine Tour, which includes BOTH The Negro Leagues Baseball Museum and The American Jazz Museum. On the Steamboat Arabia Tour you can discover the sunken treasure from a steamboat that sank in the Missouri River. The National World War I Museum and Memorial Tour will allow you to see the amazing museum that has endless sights to offer past what you will have time to see at the Welcome Party.
- **Hybrid Tours:** These tours range from beer production at Boulevard Brewing Company to a world class performance venue in the Kauffman Center for the Performing Arts.
- **Technical Tour:** Our technical tour is of the Kansas City Star Press Pavilion, a modern printing facility constructed on two city blocks downtown with special HVAC systems.

Our conference concludes with a game show themed Member's Night Out where you can be a contestant and bring home prizes. This will be a fast-paced, high-energy event that will have you laughing at your colleagues and it will be talk of ASHRAE for years to come. You don't want to miss it!

We look forward to meeting you in Kansas City!

Blake Ellis, General Chair / Kansas City Host Committee

# CRC 2019 Announcement

## 2019 REGION 1 CRC – NIAGARA FRONTIER

Thursday, August 15th – Saturday, August 17th

WELCOME TO BUFFALO!



---

### [?](#) WHAT IS THE CRC?

---

The Chapters Regional Conference (CRC) is intended to provide a forum for the dissemination of information pertaining to chapter, regional and society activities. Region I consists of Connecticut, Maine, New Hampshire, New Jersey, New York, Rhode Island & Vermont. Chapters from these areas come together to report their activities from the past year and establish goals for the coming year. Technical sessions are conducted as well as award presentations and social activities. This is an annual conference and is located in the city of one of its region's chapters and we are proud that Buffalo is this year's chosen city for Region I.

Please see the links below to find out more about the events we have planned during this year's CRC – we look forward to seeing everyone there!

# CRC 2019 Announcement

## CONFERENCE REGISTRATION FEES

Registration Type	By July 1, 2019	After July 1, 2019
Full Conference	\$375	\$450
Companion Full Conference	\$230	\$270
Kids Full Conference	free	free
Family Tour (Maid of the Mist & Cave of the winds)	\$35	\$35
Companion Tour (Frank Lloyd Wright House & Forest Lawn Cemetery)	\$35	\$35
Friday/Saturday Conference	\$225	\$270
Friday/Saturday Companion	\$135	\$165
Saturday Conference Only	\$125	\$150
Thursday Dinner Only	\$110	\$125
Friday Dinner Only	\$110	\$125
Frontier 100-Year Anniversary Gala	\$100	\$115

\*\*Registration closes August 10, 2019

## HOTEL INFO



Hotel Henry: starting at \$175-\$185 + taxes & fees  
444 Forest Ave, Buffalo, NY 14213

Named as one of Time Magazine's Greatest Places in the World 2018, we are proud to invite you to experience a unique lodging and conference setting in one of Buffalo's most iconic architectural landmarks. Opened in 1880 as the state-of-the-art Buffalo State Asylum for the Insane and surrounded by a 100 acre park designed by Frederick Law Olmsted, Hotel Henry offers a rich history and gorgeous setting for the 2019 Region 1 CRC.

*\*\*Note: Hotel reservation is separate from conference registration.*





# ASHRAE Region I

## Chapter Regional Conference - Niagara Frontier

August 15-17, 2019

### EVENT SCHEDULE

Day	Start Time	End Time	Event	Location	Attendees
<b>THURSDAY</b> August 15th	12:00 PM	7:00 PM	Registration	1st Floor Entrance	All Attendees
	12:00 PM	7:00 PM	Chapter History Displays	Lower Level Meeting Room	All Attendees
	11:30 AM	1:30 PM	Region 1 Audit	Towers 2nd Floor Boardroom	Invited RI officers
	1:00 PM	3:00 PM	Hospitality Suite		All Attendees
	2:00 PM	4:00 PM	Business Meeting 1	Towers Ballroom 4th floor	Delegates, Alternates & Regional Officers and Chairs
	4:15 PM	5:45 PM	Technical Session		All Attendees
	6:00 PM	7:00 PM	Welcome Reception Happy Hour	South Patio	All Attendees
	7:00 PM	10:30 PM	Welcome Dinner & Fireworks	Hyatt Place Rooftop Lounge	Registered attendees
	10:30 PM	2:00 AM	YEA Event		YEA
	10:30 PM	1:00 AM	Hospitality Suite		All attendees
<b>FRIDAY</b> August 16th	7:00 AM	7:00 PM	Registration	1st Floor Entrance	All Attendees
	7:00 AM	7:00 PM	Chapter History Displays		All Attendees
	7:00 AM	9:00 PM	Breakfast	Towers 2nd Floor East	All Attendees
	9:00 AM	11:00 AM	Hospitality Suite		All Attendees
	8:00 AM	9:00 AM	Local ASHRAE Recognition Breakfast	Lipsey	Invited Society & Local Guests
	8:00 AM	10:00 AM	Caucus / Executive Session	Towers Ballroom	Delegates & Alternates ONLY
	10:00 AM	11:45 AM	Chapter Operations Workshop	Towers 2nd Floor Boardroom	Chapter Officers
	10:00 AM	4:00 PM	Companion Tour	Frank Lloyd Wright & Forest Lawn Cemetery - Lunch in between	Registered Attendees
	10:00 AM	4:00 PM	Family Tour	Niagara Falls Maid of the Mist & Cave of the Winds - Lunch at Rain Forest Café	Registered Attendees
	12:00 PM	1:00 PM	Lunch	Towers 2nd Floor East	All Attendees
	1:30 PM	5:00 PM	Business Meeting 2	Towers Ballroom	Delegates, Alternates & Regional Officers and Chairs
6:00 PM	10:00 PM	Presidential Dinner	USS Little Rock at Buffalo Naval Park	Registered Attendees	
10:00 PM	1:00 AM	YEA Event		YEA	
10:00 PM	1:00 AM	Hospitality Suite		All Attendees	
<b>SATURDAY</b> August 17th	7:00 AM	10:00 AM	Registration	1st Floor Entrance	All Attendees
	7:00 AM	2:00 PM	Chapter History Displays		All Attendees
	7:00 AM	9:00 AM	Breakfast	Towers 2nd Floor East	All Attendees
	7:30 AM	9:00 AM	Business Meeting 3	Towers Ballroom	Delegates, Alternates & Regional officers & chairs
	8:45 AM	10:15 AM	Research Promotion Workshop	Towers 2nd Floor Boardroom	RP Chairs
	9:30 AM	11:30 AM	Government Affairs Workshop	East Wing 1st Floor Corridor	GA Chairs
	8:45 AM	11:45 AM	Student Activities Workshop	East Wing 2nd Floor Corridor	Student activities chairs
	9:00 AM	11:45 AM	CTTC Workshop	Towers 2nd Floor West	CTTC chairs
	8:45 AM	10:45 AM	History Workshop	Lipsey	Historians
	8:45 AM	11:45 AM	Membership Promotion Workshop	East Wing 3rd Floor Corridor	Membership chairs
	10:45 AM	11:45 AM	RECC Workshop	Lipsey	RECC chairs
	10:15 AM	12:00 PM	YEA Workshop	Towers 2nd Floor Boardroom	YEA chairs
	9:00 AM	11:00 AM	Hospitality Suite		All Attendees
	12:00 PM	1:30 PM	Awards Luncheon	Towers Ballroom	All Attendees
2:30 PM	3:30 PM	CRC Debrief	Towers 2nd Floor Boardroom	CRC Host Committee and Guests	
7:00 PM	12:00 AM	100 Year Gala Celebration	Vue Rooftop Lounge @ Curtiss Hotel	Registered Attendees	

#### Schedule Key

	Open to all attendees (some events require registration)
	Noted officers & chairs only
	Invite only

# CRC 2019 Announcement

## SOCIAL EVENTS



### Thursday, August 15th – Welcome Reception with Fireworks over Niagara Falls

No trip to Buffalo is complete without a visit to the mighty Niagara Falls. Join us for dinner at the Hyatt Place rooftop lounge overlooking the cascades of the Niagara River's three waterfalls. After dinner, sit back and enjoy a fireworks spectacular over the falls. Dinner and drinks will be served.

Time: 7:00 pm – 10:00 pm with fireworks for follow.

Address: 310 Rainbow Blvd S, Niagara Falls, NY 14303



### Friday, August 17th – Companion Tour

Fans of architecture will delight in this tour of what is considered one of Frank Lloyd Wright's finest achievements of the Prairie period, the Darwin Martin House.

After breaking for lunch, we will visit Forest Lawn cemetery, final resting place of one of the most influential engineers of our industry, Willis Carrier.



\*\*Please note that lunch costs are not included in registration fees.

.Depart: 10:00am – Returning: 4:00pm



### Friday, August 17th – Family Tour

#### *Niagara Falls Maid of the Mist*

Get up close and personal with Niagara Falls on the iconic Maid of the Mist. Operating since 1846, Maid of the Mist tours navigate the mighty water of the Niagara River Gorge taking passengers right to the center of the swirling mist. Witnessing 600,000 gallons of water per second is truly an awe-inspiring sight.

#### *Cave of the Winds*

To cap off the day, we'll head to the Cave of the Winds, which will take attendees on a short hike down the gorge and behind the falls, completing your full 360 degree tour of Niagara Falls.

We will break for lunch at the Rainforest Café, a family friendly restaurant where the rain forest comes alive with animatronic animals, indoor thunderstorms, and sounds of the jungle.

\*\*Please note that lunch costs are not included in registration fees.

Depart: 10:00am- Return: 4:00pm



# CRC 2019 Announcement



## PRESIDENTIAL DINNER

---



### Friday, August 16th – Presidential Dinner

Come aboard the USS Little Rock for a cocktail reception, dinner, and the ASHRAE Presidential message. During our time on the boat, attendees are welcomed to roam about the ship to browse the displays and artifacts located throughout.

Time: 6:00 pm – 10 pm



## 100 YEAR GALA

---



### Saturday, August 17th – 100 Year Gala

Come celebrate the Niagara Frontier Chapter's 100th Year! Dinner and drinks at the VUE rooftop lounge at the 5-star boutique Curtiss Hotel in downtown Buffalo. We will be honoring our past presidents, reminiscing on the fellowship we've shared over the years, and toasting to a bright future!

Time: 7:00 pm – 10:00 pm




REGISTER NOW! June 18th, 2019 1 PM CT

**IS ASSE-1017 & LEGIONELLA  
YOUR WORST ENEMY?  
GO TANKLESS**

Presented by:  
Sri Deivasigamani,  
CEO, Intellihot



## Is ASSE-1017 & Legionella Your Worst Enemy? Go Tankless

**A Free Supplier Webinar presented by Intellihot  
Broadcast Live Tuesday, June 18 at 2 p.m. ET**

Join us for a webinar to learn how the new ASSE Standards will allow you to eliminate costly and unreliable mixing valves, while significantly reducing the risk of Legionella.

### Presenter



#### **Sri Deivasigamani, Intellihot Co-founder & CEO**

Sridhar (Sri) Deivasigamani didn't set out to create the first on-demand hot water heater. But, after returning home from a 30-hour flight only to find his basement completely flooded from a broken water heater, he knew a worthy challenge when he saw it. After mopping up the basement, the robotics engineer immediately started troubleshooting his water heater.

By sunrise, he had the idea for what would become the first on-demand, tankless commercial water heater. Today, Intellihot boasts several large-scale clients including Levi's® Stadium, home of the San Francisco 49ers, 340 on the Park, Chicago's second tallest residential building, and Hilton Hotels.

The success of Intellihot continues to flourish, with revenue growing in excess of 100 percent year-over-year. The company now employs 50 people in both Galesburg and Peoria, and continues to secure key partnerships nationwide. Prior to founding Intellihot, Sri spent ten years at Caterpillar as a mechanical engineer with a focus on marine engines and control systems. He holds a bachelor's degree from Manipal Institute of Technology, India and a master's degree in Mechanical Engineering from Clemson University. Sri envisions a future of extraordinary efficiency, where not a watt of energy or drop of water is wasted. In his spare time, he likes to work on motorcycles and robotic lawnmowers.



## Everything You Love About ASHRAE – Just a Tap Away

Last Summer, ASHRAE announced the launch of the **free** ASHRAE 365 mobile app. Since then, over 10,000 people have downloaded the app to take advantage of year-round quick access to relevant information and useful resources from ASHRAE. Don't miss out! Download the app for event information, notifications, access to standards and guidelines, continuing education, industry jobs and much more...all from the convenience of your mobile device.



# ***It's Clam Bake Time!!!*** **The Spinning Wheel**

**7384 Thompson Road, North Syracuse**



# **Central New York Chapter**

**Thursday June 13, 2019, 4—8 PM**

**Food, Fun & Drink all included**

**—Ticket Price \$60.00/pp**

**Major Raffles items**

**50/50 Raffle**

**DJ Entertainment**

**Contact for Information: Steve Sill—[stevesill1966@hotmail.com](mailto:stevesill1966@hotmail.com) / 315-380-1427**

**Tim Anderson—[tima@rl-stone.com](mailto:tima@rl-stone.com) / 315-380-5863**

**For Tickets: [bhenderson@syracusethermal.com](mailto:bhenderson@syracusethermal.com) ASHRAE Supports K-12**

**STEM Initiatives in schools &**

**Community Sustainability Projects**

